

Steam & Water Sample Conditioning

Flow Rate, Pressure and Temperature



Biomass | Coal | Geothermal | Natural Gas | Nuclear | Petroleum | Solar

Essentials for Represent

Click on a product photo to

The essential elements of representative sampling are precise temperature, pressure and flow control — these are at the core of reliable and safe water chemistry analysis within a Steam and Water Analysis System (SWAS).

Choose a Sentry® custom-engineered solution to maximize energy output while protecting your operators and plant equipment.

SAMPLE COOLERS

Designed for efficient and cost-effective sample cooling, Sentry sample coolers are available in heavy-duty stainless steel construction, plus a wide variety of exotic alloys for corrosion resistance. Over 20 models to handle any application. ASME/CRN stamp available.

SAMPLE CHILLERS

Maintain sample temperature to 77°F (25°C) with a Sentry TCU air- or water-cooled temperature control unit or a closed-loop cooling water isolation skid.

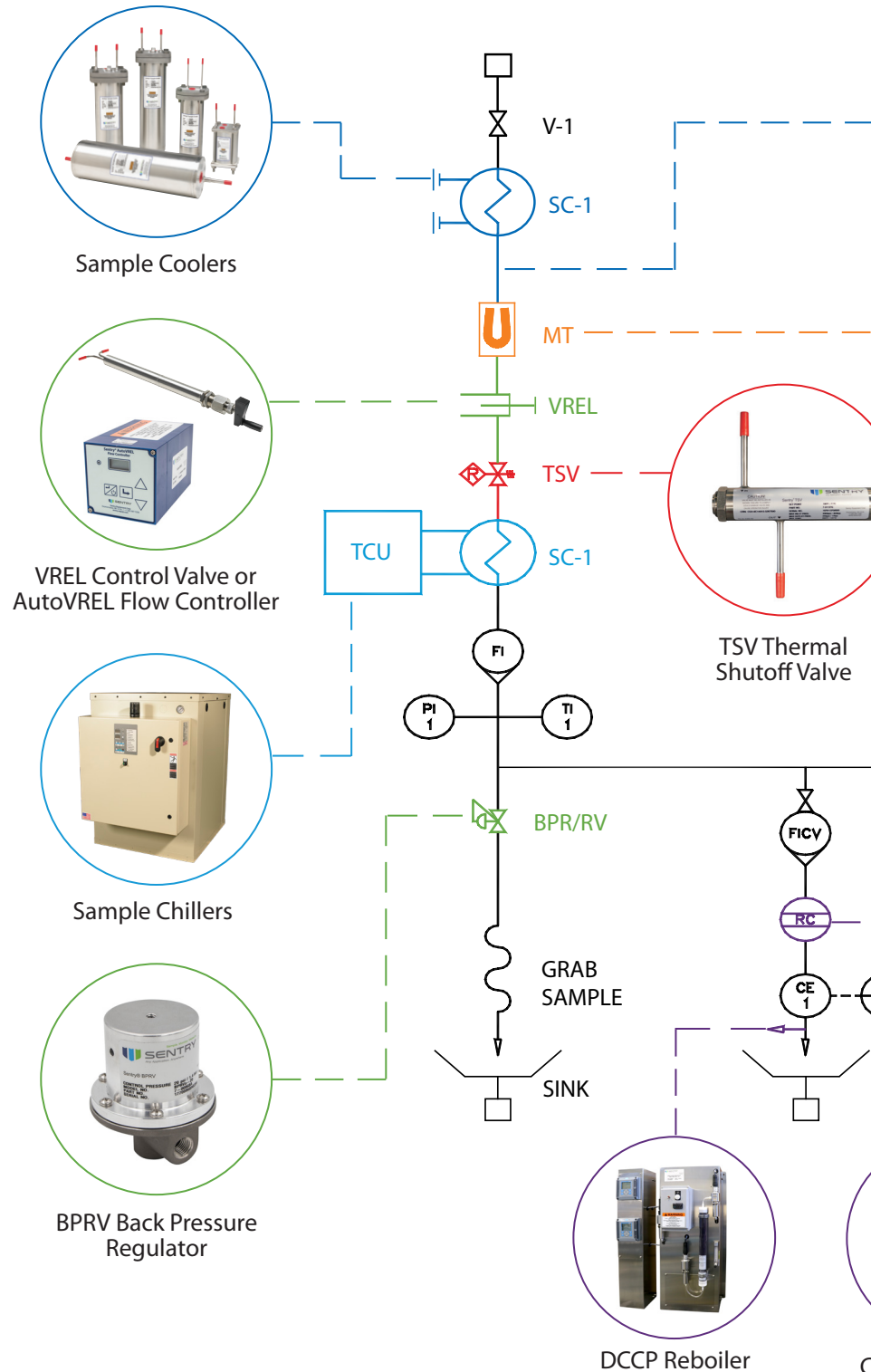
THERMAL PROTECTION VALVES

Protect operators, analyzers and sampling components from high temperature liquids. The Sentry TSV thermal shutoff valve shuts down high temperature sample in less than 5 seconds.

PRESSURE CONDITIONING

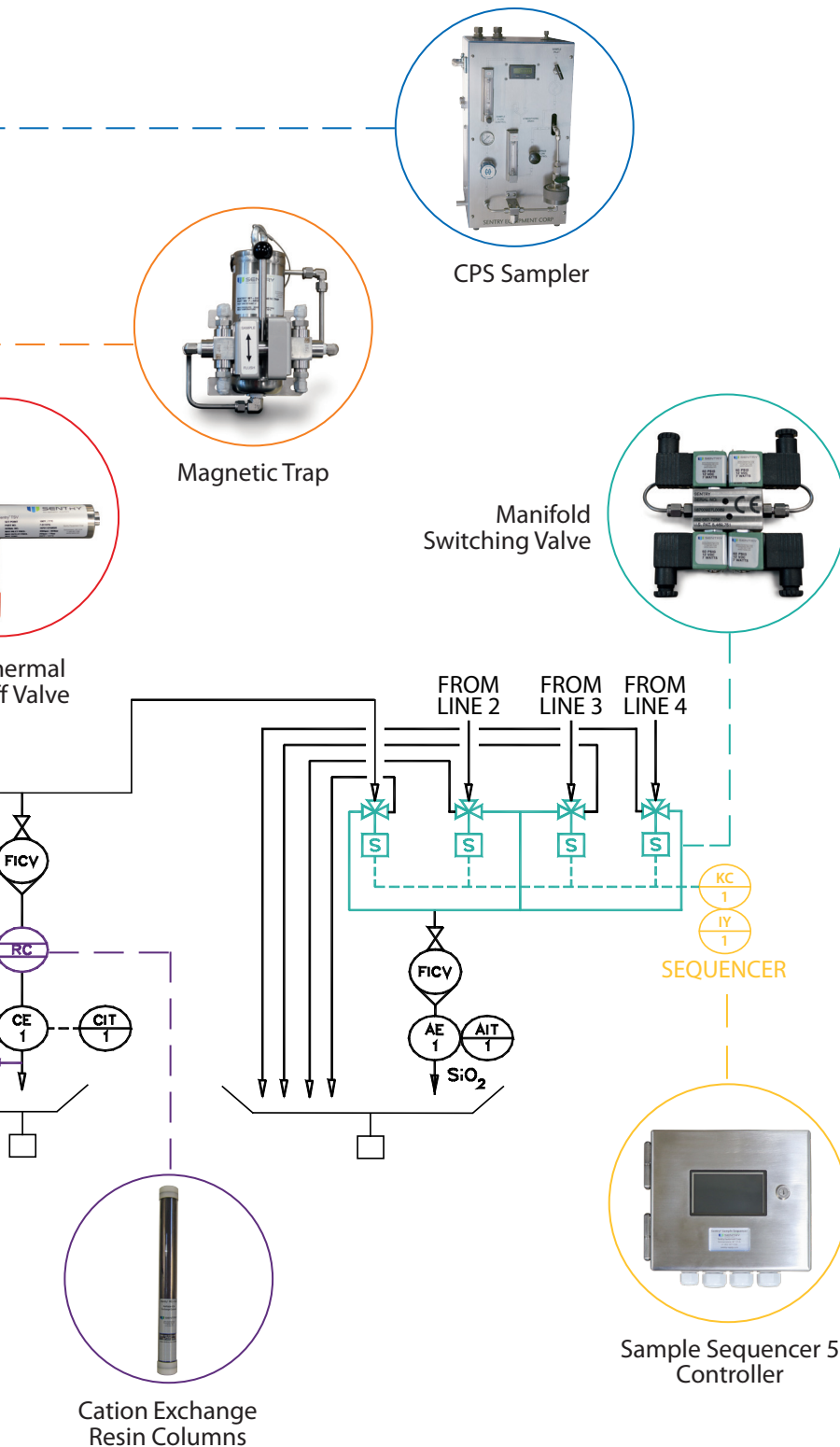
Reduce high sample pressures with the adjustable Sentry VREL® control valve.

Protect and optimize flow to your analyzers with the Sentry BPRV back pressure regulator. Steady pressure equals steady flow.



Representative Sampling

Photo to link to the web page.



CORROSION MONITORING

Monitor and prevent corrosion by collecting and quantifying particulate and iron matter throughout the thermal cycle with the Sentry CPS Sampler.

MAGNETIC TRAP

Isolate magnetite particulates to protect sample conditioning and analytical instruments from critical downtime and costly repairs.

SAMPLE CONDITIONING AUTOMATION

Automate sample flow for frequent cycling or sliding pressures with the Sentry AutoVREL flow controller.

Sequence multiple samples to a single analyzer with the Sentry manifold switching valve.

The Sentry Sample Sequencer[®] 5 controller improves efficiency and eliminates errors while time sharing several sample streams with one analyzer.

CATION EXCHANGE RESIN COLUMNS

Sentry resin columns are designed to a specific diameter and volume to prevent channeling and minimize lag time in detecting cycle chemistry contamination.

DCCP REBOILER

Sentry DCCP Reboiler degassed cation conductivity panels help you identify the source of elevated cation conductivity during startup and normal plant operation. Uses reboiler technology with sample re-cooling for quick response time and analysis at industry-recommended sample temperature.

Sentry ProShield Lifecycle Services

Controlling your steam and water quality also means reliable customer support throughout the life of your equipment. Rely on full services and support for continuous optimal performance. Our experienced technical staff of expert engineers is available to provide on-site service and training as well as technical support and troubleshooting for all your products.

- **Customer service** – general inquiries, warranty claims, order management
- **Field service** – when a problem needs immediate attention
- **ProShield Guardian service agreements** – regularly scheduled maintenance for maximum uptime
- **Replacements parts and consumables** – easily order your replacement parts and/or consumables
- **Technical support** – troubleshooting, training and technical manuals



Sarah, Employee-owner



Any Application. Anywhere.

Serving customers
in over 50 countries across
six continents worldwide.



sentry-equip.com

966 Blue Ribbon Circle North, Oconomowoc, WI 53066 U.S.A. | +1-262-567-7256 | sales@sentry-equip.com

© 2016 Sentry Equipment Corp. All rights reserved. All product and company names are property of their respective owners.

S-SW-BRO-00159-10 12-16