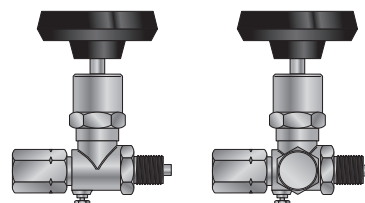


## Closing Pressure Gauge Valve Testing Pressure Gauge Valve with Pin and Sleeve Connection



### Description

Closing pressure gauge valve, type A, DN 3, asbestos free sealing, length 85 mm, including two sealings TM 20 CU

Type	Material	Max. operating temperature	Max. operating overpressure	Connection	AN
• 1 110 410	Brass CuZn40Pb2	200 °C	25 MPa	M20x1.5 / M20x1.5L	137517
• 1 110 405	Stainless steel 1.4021	300 °C	63 MPa	M20x1.5 / M20x1.5L	137517
1 110 413	Stainless steel 1.6903	500 °C	63 MPa	M20x1.5 / M20x1.5L	137517

Example of order: 1 110 412

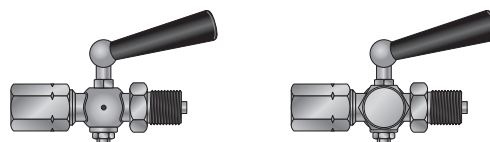
### Description

Testing pressure gauge valve, type B, DN 3, asbestos free sealing, length 85 mm, including two sealings TM 20 CU

Type	Name	Material	Max. operating temperature / overpressure	Connection / testing	AN
• 1 110 406	—	Brass CuZn40Pb2	200 °C / 25 MPa	M20x1.5 / M20x1.5L / M20x1.5	137517
• 1 110 416	VZNM	Stainless steel 1.4021	300 °C / 63 MPa	M20x1.5 / M20x1.5L / M20x1.5	137517
• 1 110 417	—	Stainless steel 1.6903	500 °C / 63 MPa	M20x1.5 / M20x1.5L / M20x1.5	137517
• 1 110 492	VZNG	Stainless steel 1.4021	300 °C / 63 MPa	G1/2" / M20x1.5L / M20x1.5	137517

Example of order: 1 110 416

## Closing Pressure Gauge Cock Testing Pressure Gauge Cock with Pin and Sleeve Connection



### Description

Closing pressure gauge cock, pin / sleeve connection, PN 25, DN 3.5, DIN 16 262, including two sealings TM 20 CU

Type	Connection	Length	Material	Max. operating temperature
• 1 210 201	G1/2" / G1/2"L	80 mm	Brass CuZn40Pb2	50 °C
• 1 210 202	M20x1.5 / M20x1.5L	80 mm	Brass CuZn40Pb2	50 °C

Example of order: 1 210 202

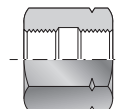
### Description

Testing pressure gauge cock, pin / sleeve connection, PN 25, DN 3.5, DIN 16 263, including two sealings TM 20 CU

Type	Connection / testing	Length	Material	Max. operating temperature
• 1 210 204	M20x1.5 / M20x1.5L / M20x1.5	80 mm	Brass CuZn40Pb2	50 °C

Example of order: 1 210 204

## Pressure Gauge Connection



### Description

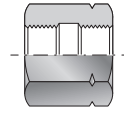
Pressure gauge connection, AN 137524, type A

Type	Connection	Material	Max. operating temperature / overpressure
13 7520 00	M12x1.5 / M12x1.5L	Carbon steel 1.0715	200 °C / 63 MPa
81 0157	M20x1.5 / M20x1.5L	Carbon steel 1.0715	200 °C / 63 MPa
• 13 7520 02	M20x1.5 / M20x1.5L	Stainless steel 1.4301	300 °C / 50 MPa
• 81 0146	M20x1.5 / M20x1.5	Carbon steel 1.0715	200 °C / 63 MPa
81 0096	G1/4" / G1/4"L	Carbon steel 1.0715	200 °C / 63 MPa
81 0079	G1/2" / G1/2"L	Carbon steel 1.0715	200 °C / 63 MPa

Example of order: 13 7520 02

- ... Ex stock version

## Reducing Pressure Gauge Connection



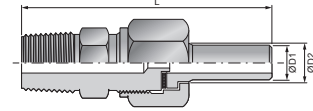
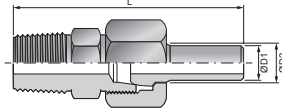
**Description**

Reducing pressure gauge connection, AN 137524, type G

Type	Connection	Material	Max. operating temperature / overpressure
• 13 7523 00	G1/2" / M20x1.5L	Carbon steel 1.0715	200 °C / 63 MPa
• 13 7523 01	G1/2" / M20x1.5L	Stainless steel 1.4021	300 °C / 50 MPa

Example of order: 13 7523 00

## Reducing Pipe Union



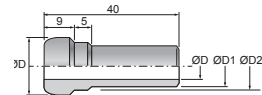
Type	Description		
• SK	Reducing pipe union with welding cone and cap nut		
<b>Versions of reducing pipe union</b>			
Code	Thread of pipe union	Material of pipe union	Material of cap nut
• 1	1/2"-14 NPT / M22x1.5	Stainless steel 1.4301	Carbon steel 1.0721
9	Other		
<b>Versions of cone</b>			
Code	ØD <sub>1</sub> (ØD <sub>2</sub> ) / Ød	Diameter of cone ØD	Nominal pressure
• 4	Ø12 (Ø14) / Ø8	Ø16.7	PN 160
• 5	Ø14 / Ø8	Ø16.7	PN 400
9	Other		
Code	Material of cone	Max. operating temperature	
• 1	Carbon steel 1.0570	400 °C	
• 2	Structural alloy steel 1.7715	500 °C	
• 4	Stainless steel 1.4541	500 °C	
9	Other		

Example of order: SK 1 5 4 (SK 1 4 1 = DZ1, SK 1 4 4 = DZ2, SK 1 5 1 = DZH1, SK 1 5 4 = DZH2)

Type	Description			
• SV	Reducing pipe union with welding nipple and cap nut			
<b>Versions of reducing pipe union</b>				
Code	Thread of pipe union	Material of pipe union	Material of cap nut	Material of sealing
• 1	1/2"-14 NPT / M20x1.5	Stainless steel 1.4301	Carbon steel 1.0721	Cu
• 2	1/4"-18 NPT / M20x1.5	Stainless steel 1.4301	Carbon steel 1.0721	Cu
9	Other			
<b>Versions of nipple</b>				
Code	Ø D <sub>1</sub> (Ø D <sub>2</sub> ) / Ø d	Nominal pressure		
• 4	Ø12 (Ø14) / Ø 8	PN 160		
• 5	Ø14 / Ø8	PN 400		
9	Other			
Code	Material of nipple	Max. operating temperature		
• 1	Carbon steel 1.0570	400 °C		
• 2	Structural alloy steel 1.7715	500 °C		
• 4	Stainless steel 1.4541	500 °C		
9	Other			

Example of order: SV 1 5 4 (SV 1 4 1 = DZM1, SV 1 4 4 = DZM2, SV 1 5 1 = DZMH1, SK 1 5 4 = DZMH2)

## Welding Cone

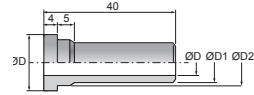


Type	Description		
• KN	Welding cone		
Code	For pipe union	Diameter of cone ØD	Through hole of cap nut
• 18	M18x1.5; M20x1.5	Ø14.7	Ø12 mm
• 20	M22x1.5	Ø16.7	Ø14 mm
Code	Dimensions ØD <sub>1</sub> (ØD <sub>2</sub> ) / Ød	Nominal pressure	
• 3	Ø12/Ø8	PN 160	- not for KN 20
• 4	Ø12(Ø14)/Ø8	PN 160	- not for KN 18
• 5	Ø14 / Ø8	PN 400	- not for KN 18
9	Other		
Code	Material	Max. operating temperature	
• 1	Carbon steel 1.0570	400 °C	
• 2	Structural alloy steel 1.7715	550 °C	
• 4	Stainless steel 1.4541	550 °C	
9	Other		

Example of order: KN 18 3 1

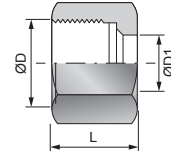
• ... Ex stock version

## Welding Nipple



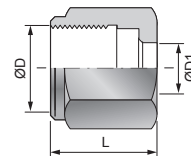
Type	Description		
• VN	Welding nipple		
Code	For pipe union	Diameter ØD	
• 20 99	M20x1.5 ; G1/2" Other	Ø17.5	
Code	Dimensions ØD <sub>1</sub> (ØD <sub>2</sub> ) / Ød	Nominal pressure	Through hole of cap nut
• 4 • 5 9	Ø12 (Ø14) / Ø8 Ø14 / Ø8 Other	PN 160 PN 400	Ø14 mm Ø14 mm
Code	Material	Max. operating temperature	
• 1 • 2 • 4 9	Carbon steel 1.0570 Structural alloy steel 1.7715 Stainless steel 1.4541 Other	400 °C 550 °C 550 °C	
Example of order: VN 20 5 1			

## Cap Nut for Welding Cone



P	Description		
• MK	Cap nut for welding cone, nominal pressure PN 400		
Code	Dimension of thread D	Length L	
18M • 20M • 22M 99	M18x1.5 M20x1.5 M22x1.5 Other	16 mm 21 mm 21 mm	
Code	Through hole of nut D1	For cone	
• 2 • 4 9	Ø12 mm Ø14 mm Other	KN183 . (not for thread M22x1.5) KN204 . , KN205 . (not for thread M18x1.5 and M20x1.5)	
Code	Material	Max. operating temperature	
• 0 4 9	Carbon steel 1.0721 Stainless steel 1.4301 Other	300 °C 400 °C	
Example of order: MK 20M 2 0			

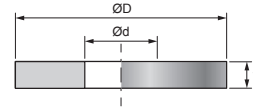
## Cap Nut for Welding Nipple



Type	Description		
• MV	Cap nut for welding nipple, nominal pressure PN 400		
Code	Dimension of thread D	Length L	
• 20M 1/2G 99	M20x1.5 G1/2" Other	25 mm 25 mm	
Code	Through hole of nut D1	For nipple	
• 4 9	Ø14 mm Other	VN204 . , VN205 .	
Code	Material	Max. operating temperature	
• 0 • 4 9	Carbon steel 1.0721 Stainless steel 1.4301 Other	300 °C 400 °C	
Example of order: MV 20M 4 0			

• ... Ex Stock Version

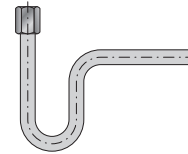
## Flat Sealing for Manometric Pipe Union



Type	Description	
• TM	Flat sealing for manometric pipe union	
Code	For manometric pipe union	Dimensions (ØD / Ød - t)
• 12	M12x1.5 ; G1/4"	Ø9.5 / Ø5.5 - 2
• 20	M20x1.5 ; G1/2"	Ø17 / Ø6.5 - 2
• 99	Others	
Code	Material	Max. operating temperature
• CU	Annealed copper	300 °C
• AL	Aluminium	300 °C
• PTFE	PTFE	180 °C
• 9	Others	

Example of order: TM 20 CU

## Welding Condensation Loop, U-Form

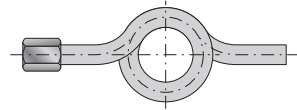


**Description**  
Welding condensation loop, U-form, AN 13753, type B, PN 250

Type	Connection	Material	Max. operating temperature	Pipe dimension
• 1 780 067	M20x1.5	Carbon steel 1.0570	300 °C	20x2.5
• 1 780 059	M20x1.5	Stainless steel 1.4541	300 °C	20x2.5

Example of order: 1 780 067

## Welding Coiled Condensation Loop

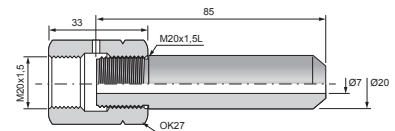


**Description**  
Welding coiled condensation loop, AN 13753, type D, PN 250

Type	Connection	Material	Max. operating temperature	Pipe dimension
• 1 780 069	M20x1.5	Carbon steel 1.0570	300 °C	20x2.5
• 1 780 061	M20x1.5	Stainless steel 1.4541	300 °C	20x2.5

Example of order: 1 780 069

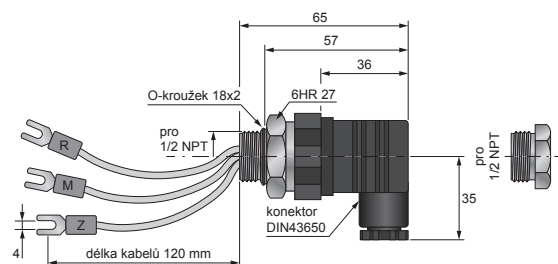
## Adapter with Connection



Type	Description	
• NP	Adapter with connection M20x1.5, PN 630	
Code	Material of adapter / connection	Max. operating temperature
• 1	Carbon steel 1.0570 / stainless steel 1.4301	400 °C
• 4	Carbon steel 1.4301 / stainless steel 1.4301	400 °C
• 9	Other	

Example of order: NP 1

## Connector ISO 4400 (DIN 43650) and Blinder 1/2" NPT



Type	Description	
• DK1	Connector ISO 4400 (DIN 43650) and blinder for inner thread 1/2"-14 NPT	

Example of order: DK1

- ... Ex stock version