



JSP Industrial Controls

JSP Product Portfolio

From simple sensors to complex measuring systems

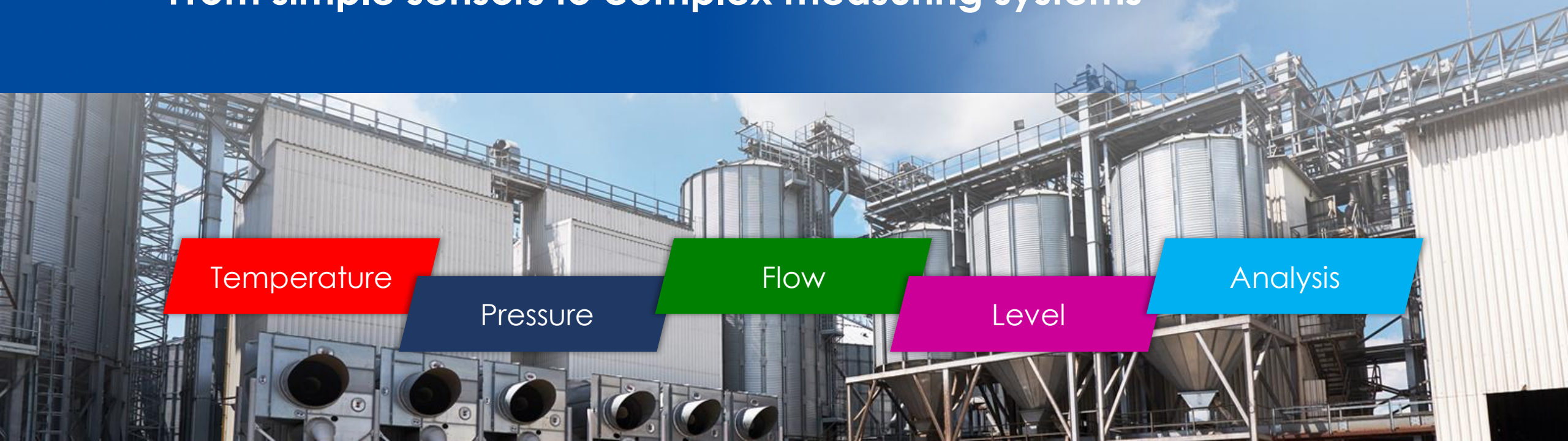
Temperature

Pressure

Flow

Level

Analysis



About JSP



JSP, s.r.o. is a top Czech supplier and manufacturer in the field of measurement and control technologies.

JSP delivers complete instrumentation packages and provides a wide range of accompanying services.



JSP Product Portfolio

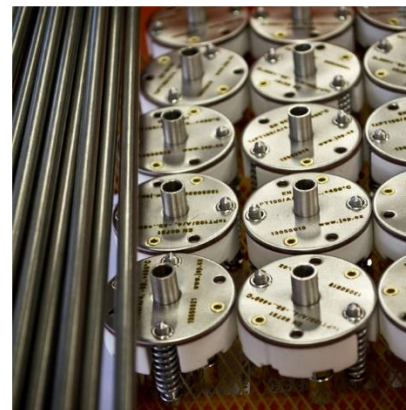
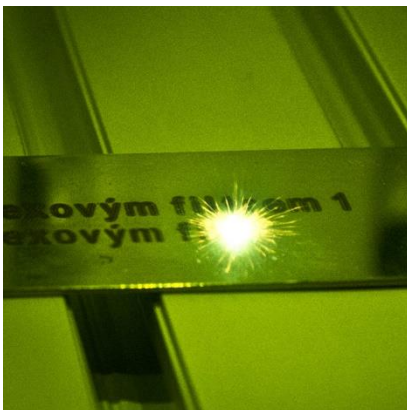
JSP in numbers

- **30 years** on the market
- **65 employees**
- **4 offices** in the Czech Republic and Slovakia
- **30 000 pcs** of JSP product manufactured annually
- **6 million EUR** average annual turnover

Manufacture & logistics



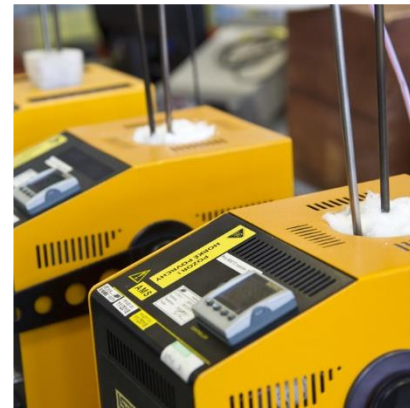
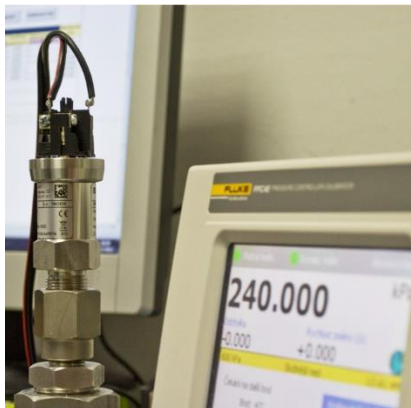
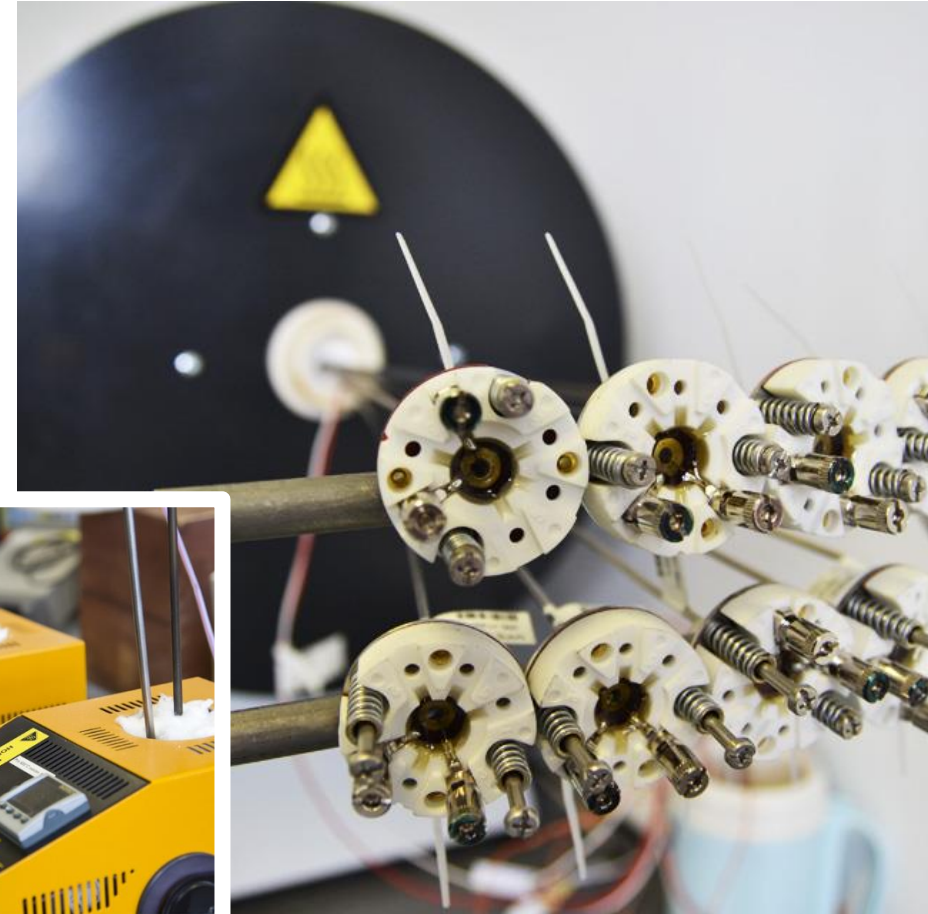
Manufacturing capacities equipped with modern technologies enable us to quickly satisfy single-unit as well as high volume batch production requirements. Many products are readily available on stock.



Accredited calibration laboratory

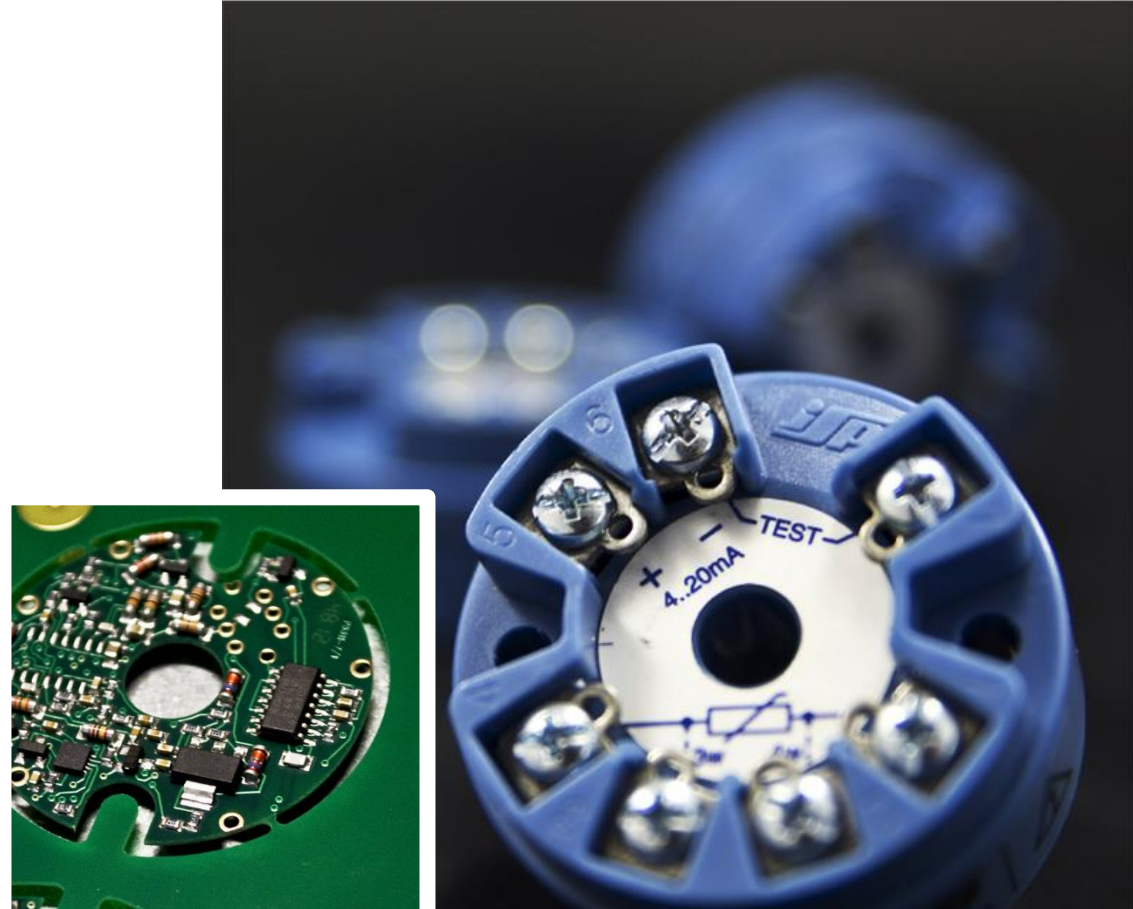


The in-house Accredited Calibration Laboratory and Authorized Metrological Centre serve to assure the quality of the manufactured products and **provide professional calibration services for temperature and pressure measurement instruments.**



JSP has been engaged in the development of its own products.

- **Electronic products** – especially temperature transmitters, pressure transmitters, communicators and corresponding software.
- **Range of industrial sensors for temperature and pressure measurement, manifolds, Steam and Water sampling solutions etc.**



Quality Assurance



Our management system is certified according to

EN ISO 9001
EN ISO 14001
EN ISO 45001

and is thoroughly implemented in all the main processes.



Sheath Resistance and Thermocouple Temperature Sensor



- Single/Dual sensor: Pt100 or thermocouple J, K, N, T
- Flexible stem with fast response to temperature changes
- Measuring range up to 1300 °C
- Stem diameter 0.5 to 6 mm, selectable length up to 50 m
- Sheath material – stainless steel, Inconel 600, Nicrobell/Pyrosil
- Suitable for measurements in potentially explosive environments
- Used for surface, body, bearing temperature measurement of boilers, turbines, machines



Modular Resistance and Thermocouple Temperature Sensor

- Single/Dual sensor: Pt100 or thermocouple J, K, N, T
- Large variety of combinations – with or without thermowell, with/out protection tubes, extensions etc.
- Measuring range up to 1300 °C
- Installation of transmitter into the sensor head
- Wide selection of process connection modifications
- Suitable for measurements in potentially explosive environments
- Used for temperature measurements in pipes, vessels, chimneys, silos etc.



Straight Thermocouple Temperature Sensor

- Single/Dual sensor: thermocouple J, K, R, S, B
- Measuring range up to 1800 °C
- Large variety of protection tubes and their combinations
- Tube materials – Steel, Ceramics, Sapphire
- Installation of transmitter into the sensor head
- Used for temperature measurements in furnaces, ovens, smelters etc.



Compact Resistance Temperature Sensor

- Single sensor: Pt100, Pt1000 or Ni100, Ni1000
- Compact body with connector ISO4400 or head type MA
- Measuring range -50 to +200 °C
- Stem diameter 4 or 6 mm, selectable length up to 400 mm
- Thread connection with/without extension or CLAMP flange
- Suitable for mass applications in machinery, food and pharmacy industry or general use



T2415, T2610



Compact Resistance Temperature Sensor with 4 to 20 mA Output

- Single sensor: Pt100 with transmitter
- Compact body with connector ISO4400
- Measuring range -50 to +200 ° C with selectable ranges (T2415) or fully programmable (T2610)
- Accuracy class up to AA (1/3B) according to EN 60751.
- Stem diameter 4 or 6 mm, selectable length up to 400 mm
- Thread connection with/without extension or CLAMP flange
- Possibility of built-in process display



Thermowells for standard and harsh industrial applications

- Pressure up to 400 bar, temperature up to 620 °C
- Conical or cylindrical shape
- Wide selection of process/sensor connections
- Standard and highly durable materials
- Optional protective coating for increased resilience

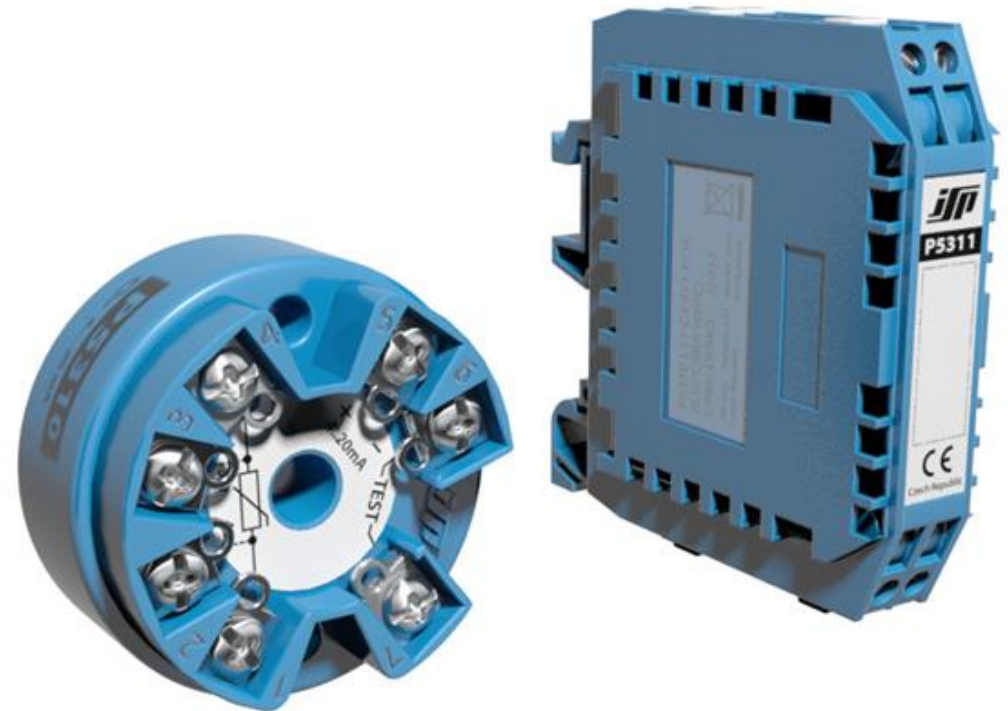


P5310, P5311



Universal programmable transmitter with LHP communication

- Support all common resistance and thermocouple sensors
- Linearized output signal 4 to 20 mA
- Accuracy up to 0.1%
- Galvanic isolation of input from output 1000 VAC (P5311)
- Programmable by LHPWinConf and standard HART modem
- High resistance against interference (industrial environment)



P5320



Precise programmable transmitter with HART communication

- Support all common resistance and thermocouple sensors
- Linearized output signal 4 to 20 mA with HART communication
- Accuracy up to 0.05% (calibrated range)
- Galvanic isolation of input from output 1000 VAC
- Programmable by HARTWinConf and standard HART modem
- High resistance against interference (industrial environment)
- Dual channel DIN version



HART Handheld configurator and HART modem

- Adjustment of the range of HART and LHP instruments
- Displays actual input and output values of transmitter, and up to three other variables
- Power supply for transmitter without any external power supply unit
- Testing a current loop, and zero setting of a (pressure) sensor.
- Changing notes, units, damping, etc.
- Powered by battery with up to 15 hours of operation or USB
- Serves as a HART modem



D2510, D2610, D2620



Miniature Precise SMART Pressure Transmitter

- Only five basic ranges cover pressures from 4 kPa to 4 MPa
- Programmable current output 4 to 20 mA with LHP/HART communication (D2620)
- Easy remote configuration
- Accuracy 0.2 or 0.1 %, miniature dimensions
- Stainless steel diaphragm, various input designs including front-flush diaphragm



Programmable pressure sensor and switch with display

- Measuring range up to 70 MPa
- Analog output 4 to 20 mA or 0 to 10 / 5 V
- Adjustable switching output 2× PNP / NPN
- Accuracy 1 / 0.5 / 0.25 %
- Compact stainless steel design with built-in display
- The display with electrical connection can be rotated in a range of 330°



D3620, D5620



Precise intelligent pressure sensors with HART communication

- Version for absolute/relative (D3620) or differential pressure (D5620)
- Only six basic ranges cover pressures from 2 kPa to 40 MPa
- Programmable current output 4 to 20 mA with HART
- Easily configurable and scalable up to 1:20 and sensor zeroing
- Accuracy up to 0.1 % in reference conditions
- Robust case with display a stainless steel diaphragm
- Configurable using built-in buttons or hand-held configurator HARTConf

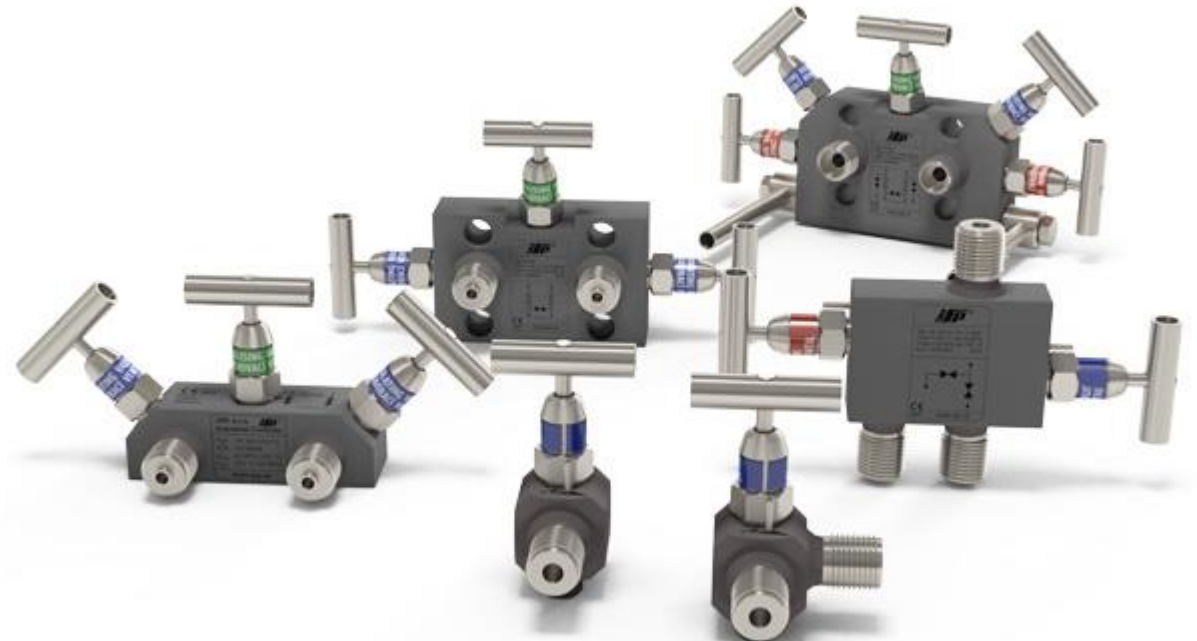


VS100, VS200, VS300, VS500



Valves and Manifolds

- Block-and-bleed, 2-way, 3-way, 5-way versions
- Used for pressure, differential pressure measurement circuits
- Max. service pressure up to 42 MPa and temperature 500 °C
- Many modifications of process connection
- Various sealing options to serve diverse applications
- Wide range of accessories



D2610L, D2415L



Submersible hydrostatic pressure sensors

- Level measurement of liquids, slurries, suspensions and emulsions
- D2610L Programmable version with a range up to 160 m, includes LHP communication protocol
- D2415L Low-cost version with a range up to 100 m
- Stainless steel case with a 27 mm diameter
- Accuracy up to 0.2 %
- Easy cleaning of the separating diaphragm
- Compensation of atmospheric pressure

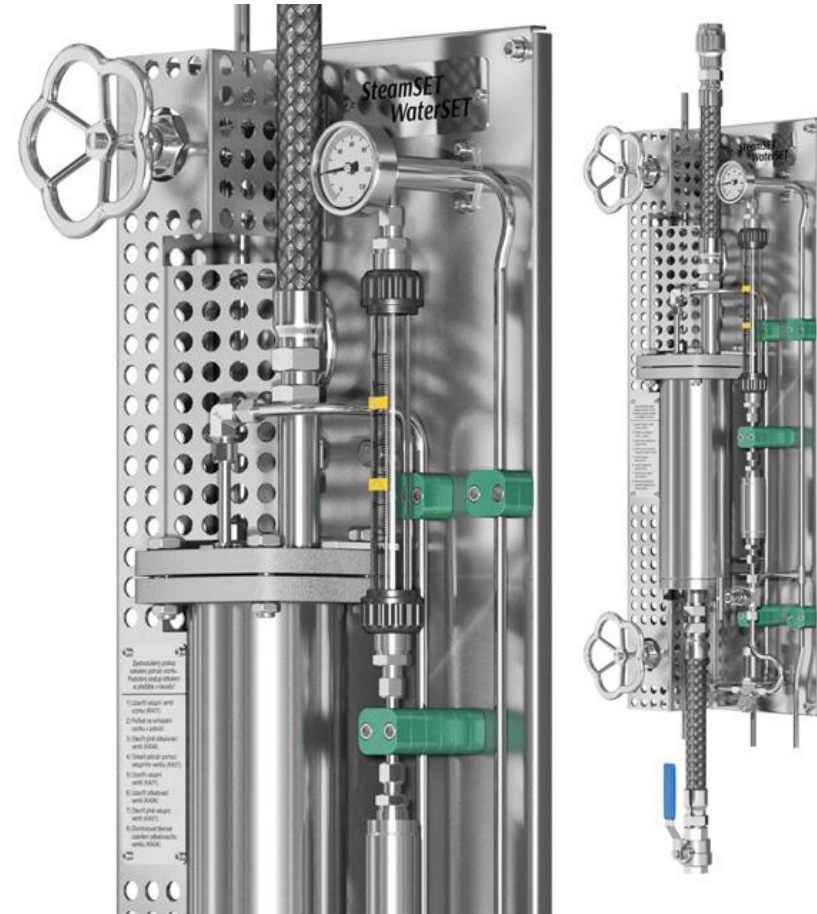


SteamSET, WaterSET



Sampling and sample conditioning panels

- Panels and complete systems used for steam and water sample conditioning with consequent online analysis
- Effective reduction of temperature and pressure
- Ensures a safe and stable flow of sample to analyzers
- Turnkey delivery including complete documentation, assembly and commissioning on site



Analyzer panels



Online measurement of specific steam and water parameters

- Compact panels that can be mounted on a rack together with Sampling panels or as a wall mounted solution
- A wide choice of analyzers covering the needs of energy sector:
- Measurement of conductivity, pH, Phosphate, Oxygen, Sodium, Silica content etc.
- Possibility to deliver analyzers from various manufacturers



Instrumentation Package deliveries



JSP offers deliveries of complete measurement circuits starting from a tapping/measurement point all the way to the terminals of control system including valves, impulse tubes, instruments, transmitters, various accessories etc.

- **Product range covers all main categories** of field measurement – temperature, pressure, level, flow
- For specific cases also **engineering, implementation, assembly and commissioning** can be provided
- **Documentation and certification** according to the customer requirements are ensured



JSP Contact



JSP Headquarters

JSP, s.r.o.

address: Raisova 547
506 01 Jicin
Czech Republic

phone: +420 493 760 811

fax: +420 493 760 820

service line: +420 605 951 061

e-mail: jsp@jsp.cz



For more information visit
our website www.jsp.cz